

# Message of the Director General of the National Company for Road Infrastructure Administration (C.N.A.I.R.), Cristian PISTOL, for the participants in the A.P.D.P. Congress 2026

Distinguished guests, Ladies and Gentlemen,

As the Principal Delegate of Romania, I have the distinct honour of supporting the organization of this congress dedicated to the road infrastructure sector.

The road infrastructure sector is essential for economic development, citizen safety, and community connectivity. This event provides a valuable platform for dialogue, exchange of experience, and presentation of the latest technical, legislative, and managerial solutions in the field. It brings together the key actors involved in the development of the country's road infrastructure—research, design, management, construction, administration, and maintenance.

In recent years, Romania has made significant progress in the development of its road infrastructure. The year 2024 marked a record milestone, with approximately 200 km of motorways and expressways opened to traffic, followed by more than 140 km added in 2025. At present, Romania has a network exceeding 1,400 km of high-speed roads.

At the same time, contracts for works execution or design-and-build are currently underway for approximately 650 km of motorways and expressways, confirming the accelerated pace of investment in this sector.

Among the notable achievements in Romania's road infrastructure are the full completion of the Craiova–Pitești Expressway, the completion of key sections of the Bucharest Ring Motorway (A0), and the significant progress made on the Moldova Motorway (A7). These investments contribute to reducing travel times, increasing road safety, and supporting balanced regional development.

I would also like to recall, in this context, the recent geopolitical circumstances—the COVID crisis, the war in Ukraine, and the energy crisis—which, despite the disruptions they created at European and global level, were managed responsibly. All obstacles were overcome through solution-oriented management. I was supported by a team of professionals who, through appropriate management, contributed to delivering projects on time and to the required quality standards.

Moreover, in a context marked by rapid technological developments, increasingly stringent road-safety requirements, and the need for sustainable infrastructure, cooperation between specialists, authorities, and the private sector becomes more important than ever. The Congress provides an opportunity to examine current challenges and to identify concrete directions for the development and modernization of the road network. Throughout the sessions, key topics will be addressed, including innovations in road construction and maintenance, process digitalization, sustainable mobility, and the legislative framework required to support these transformations. Your contributions will be essential in shaping effective and applicable solutions. We value your participation and invite you to remain actively involved in strengthening the impact of the Congress on Romania's road infrastructure.



**Cristian PISTOL, Director General of C.N.A.I.R., Honorary President of A.P.D.P.**

# **Invitation Message – President of the Professional Association of Roads and Bridges of Romania The 17th National Congress of Roads and Bridges Braşov, September 2026**

Dear colleagues, distinguished guests, and partners of the road infrastructure community,

The 17th National Congress of Roads and Bridges, which will take place in September 2026 in Braşov, offers me the distinct opportunity to invite you to participate in the activities of this long-standing event, one that is defining for the evolution of our profession and for the development of Romania's road infrastructure.

This year's edition takes place at a time when our country is experiencing one of the most dynamic periods of investment in transport infrastructure in recent decades. The expansion of the motorway and expressway network, the modernization of national and county roads, the digitalization of design and construction processes, and the introduction of concepts such as green infrastructure, climate resilience, smart mobility, and digital road-network management represent major directions that define both the present and the future of our field.

In recent years, Romania has made significant progress in: – adopting European standards on sustainability and road safety, – using innovative materials and advanced monitoring technologies, – integrating concepts such as digital twins, smart sensors, and predictive analytics, – developing infrastructure adapted to climate change and to the mobility needs of modern society.

The Congress in Braşov will provide the ideal framework for analysing these developments, presenting research results and major ongoing projects, and identifying the strategic directions that will guide the development of the road network in the coming decade. We will discuss the application of the most advanced techniques in design, construction, maintenance, and operation, with the aim of offering decision-makers solid recommendations for strengthening a modern, efficient, and safe road infrastructure.

In addition to the technical sessions, participants will have the opportunity to visit representative sites in the Braşov area, explore examples of good practice, and discover the beauty of a region with strong technical traditions and a strategic role within the national road network.

I am confident that your presence at this landmark event will represent a valuable professional experience and an opportunity for dialogue among specialists, researchers, administrators, and industry representatives.

It is with the highest consideration that I invite you to take part in the National Congress of Roads and Bridges – Braşov 2026, so that together we may continue the tradition of excellence in Romania's road infrastructure sector.



**President of the Professional Association of Roads and Bridges of Romania, Liliana HORGA**

## SCIENTIFIC COMMITTEE

### President

- Prof. Dr. Eng. Gheorghe LUCACI - U.P. Timișoara

### Vice-president

- Assoc. Prof. Dr. Eng. Gavril HODA - U.T. Cluj-Napoca

### Members

- Assoc. Prof. Dr. Eng. Valentin ANTON - U.T.C. București
- Prof. Dr. Eng. Florin BELC - U.P. Timișoara
- Prof. Dr. Eng. Vasile BOBOC - U.T. Gh. Asachi Iași
- Prof. Dr. Eng. Nicolae BOȚU - U.T. Gh. Asachi Iași
- Lecturer Dr. Eng. Alexandru BRATU - U.T. Brașov
- Assoc. Prof. Dr. Eng. Adrian BURLACU - U.T.C. București
- Lecturer Dr. Eng. Rodica CADAR - U.T. Cluj-Napoca
- Assoc. Prof. Dr. Eng. Corina CHIOTAN - U.T.C. București
- Prof. Dr. Eng. Claudiu Cristian COMISU - U.T. Gh. Asachi Iași
- Assoc. Prof. Dr. Eng. Mircea CONȚIU - U.T. Brașov
- Assoc. Prof. Dr. Eng. Ciprian COSTESCU - U.P. Timișoara
- Prof. Dr. Eng. Mihai ILIESCU - U.T. Cluj-Napoca
- Assoc. Prof. Dr. Eng. Ștefan GUȚIU - U.T. Cluj-Napoca
- Prof. Dr. Eng. Mădălina STOIAN - U.T.C. București
- Prof. Dr. Eng. Eduard PETZEK - U.P. Timișoara

## ORGANIZING COMMITTEE

### President:

– Eng. Liliana HORGA – President of A.P.D.P. România

### Vice-presidents

- Eng. Cristian PISTOL - Director General C.N.A.I.R. S.A.
- Tudor Alexandru DUȚU – Regional Director D.R.D.P. Brașov

### Members:

- Eng. Ionuț ANCA - A.P.D.P. Brașov Branch
- Eng. Daniel ANTON - A.P.D.P. Brașov Branch
- Eng. Alexandru BRATU - A.P.D.P. Brașov Branch
- Assoc. Prof. Dr. Eng. Mircea CONȚIU – Technical University Brașov
- Eng. Timea HALMAGYI - A.P.D.P. Brașov Branch
- Eng. Gheorghe ISPAS - A.P.D.P. Brașov Branch
- Eng. Odeta MOLDOVANU - A.P.D.P. Brașov Branch
- Eng. Mihai Ioan ROZOREA - A.P.D.P. Brașov Branch
- Eng. Dan SUHANI - A.P.D.P. Brașov Branch

### Secretary:

– Eng. Artemiza GRIGORAȘ

# **THE NATIONAL CONGRESSES OF ROADS AND BRIDGES IN ROMANIA**

- I. Sinaia, 06 – 07 November 1970
- II. București, 25 – 26 October 1959
- III. Iași, 21 – 23 March 1974
- IV. Constanța, 30 September – 02 October 1976
- V. Timișoara, 06 – 08 December 1978
- VI. Tușnad, 08 – 09 December 1982
- VII. Pitești, 10 – 11 October 1986
- VIII. Cluj-Napoca, 05 – 06 June 1990
- IX. Neptun, 06 - 07 October 1994
- X. Iași, 15 – 17 September 1998
- XI. Timișoara, 11 – 13 September 2002
- XII. București, 20 – 22 September 2006
- XIII. Poiana Brașov, 15 – 17 September 2010
- XIV. Cluj-Napoca, 10 – 13 September 2014
- XV. Iași, 19 – 22 September 2018
- XVI. Timișoara , 21 – 24 September 2022

**The 17th National Congress will take place in Brașov, from 23 to 25 September 2026.**

# CONGRESS THEMES

## Theme 1 – Road Infrastructure Administration

**Theme rapporteurs** – Prof. Dr. Eng. **Gheorghe LUCACI** and Assoc. Prof. Dr. Eng. **Mircea CONȚIU**

**Road infrastructure administration** brings together papers that examine how the road network is planned, operated, monitored, and maintained, with a focus on efficiency, safety, and the use of modern technologies. It provides a coherent perspective on a contemporary approach to road-infrastructure management, in which technology, structural analysis, traffic assessment, and strategic management converge to support a high-performance and sustainable road network.



## Theme 2 – Road Safety

**Theme rapporteurs** - Assoc. Prof. Dr. Eng. **Valentin ANTON** and Eng. **Cristian ANDREI**

**Road safety** brings together papers dedicated to reducing road-traffic risks through technical assessments, modern technologies, and integrated operational measures. It offers a coherent perspective on road safety, integrating risk evaluation, intelligent technologies, constructive solutions, and the analysis of infrastructure behaviour under critical conditions, with a strong emphasis on prevention and the protection of human life.



## Theme 3 – Resilience and Sustainability of Road Networks

**Theme rapporteurs** - Assoc. Prof. Dr. Eng. **Gavril HODA** and Dr. Eng. **Alexandru BRATU**

**Resilience and sustainability of road networks** bring together papers dedicated to enhancing the resilience and sustainability of road infrastructure through durable technical solutions, resource optimization, and adaptation to changing environmental and traffic conditions. The theme offers an integrated perspective on how resilience and sustainability can be incorporated into all stages of the infrastructure life cycle, supporting a robust, adaptable, and environmentally friendly road network.



## BRAȘOV

It is one of the most beautiful and best-preserved medieval cities in Romania, located in the centre of the country, in a spectacular mountain region. The average altitude is approximately 600 metres, but it ranges from 500 to over 900 metres in the higher areas (e.g., the Poiana Brașov district), which is also a tourist resort.

Brașov offers a rare balance:

- clean air and mountain nature;
- a well-preserved historical heritage;
- quick access to landmarks such as Bran Castle or Râșnov Fortress;
- good tourist infrastructure.

**Brașov perfectly combines history, nature, and architecture:**

- **Council Square (Piața Sfatului)** – the lively old town centre, lined with colourful buildings



It is the central point of Brașov's historic centre and is considered one of the most visited and emblematic places in Romania. Known in the past by its German name *Marktplatz*, the square served for centuries as the main commercial hub where merchants from Transylvania, Wallachia, and Moldavia met.

- **The Black Church** – the largest Gothic edifice in Romania



The Black Church is the most important Gothic architectural monument in Romania and the emblematic symbol of the city of Braşov. Built between 1383 and 1477, it holds the title of the largest medieval church in Southeastern Europe.

- **Rope Street (Strada Sforii)** – one of the narrowest streets in Europe



It is one of the narrowest streets in Europe and an iconic symbol of the historic centre. It connects Cerbului Street with Poarta Şchei Street.

- **Tâmpa** – the city’s symbolic mountain, accessible on foot or by cable car



Located right in the heart of the city, it offers the most famous panoramic view over the historic centre. With a maximum altitude of 960 metres, it is designated as a natural reserve due to the rare plant and animal species it shelters.

- **The Braşov Citadel (Cetăţuia Braşovului)** – a fortification offering panoramic views



It is the fortification visible on the hill above the historic centre. Initially built as a wooden tower in 1524, it was later expanded into a stone fortress with four bastions.

- **The White Tower and the Black Tower** – medieval remnants



They are two of the most important observation and defence points of the old Braşov citadel, located on Warthe Hill. Both offer spectacular panoramic views over the historic centre and the Black Church.

- **Poiana Braşov** – a mountain resort renowned for skiing and relaxation



It is the largest and most modern mountain resort in Romania, located in the Postăvaru Massif at an altitude of 1,020 metres. It is the country's main destination for winter sports, offering the most extensive ski area and a high-end tourist infrastructure.

# Cum ajungem la Braşov?

	Distanţă (km)	Auto (temp. estimat)	Tren (temp. estimat)	Microbuz (temp. estimat)
Bucureşti Braşov	→ 170 km	2h 30min - 3h	2h 30min - 3h	~3h
Sibiu Braşov	→ 140 km	2h 30min - 3h	~3h	~3h
Târgu Mureş Braşov	→ 180 km	3h - 3h 30min	4h - 5h	~3h 30min
Bacău Braşov	→ 180 km	3h - 3h 30min	4h - 5h	~3h 30min

**AEROPORTURI ÎN APROPIERE**

Bucureşti (OTP)	Sibiu (SBZ)	Târgu Mureş (TGM)	Bacău (BCM)	Braşov (Ghimbav) (GHV)
-----------------	-------------	-------------------	-------------	------------------------

Acces ușor pe principalele rute naționale  
 Conexiuni feroviare rapide și eficiente  
 Opțiuni flexibile de transport pentru fiecare participant

## Accesibil, conectat și pregătit pentru viitor – Braşovul vă așteaptă la congres!

Given that the Municipality of Braşov is one of the most accessible cities in Romania, efficiently connected through both road and rail networks with the main cities in the region, below you will find a detailed overview of all the illustrated routes:

### BUCHAREST – BRAŞOV

**Distance:** ~ 170 km

**Duration:**

By car: 2h 30min – 3h (DN1)

By train: 2h 30min – 3h

By minibus: ~3h

**Notes:** this is the busiest route; delays may occur during weekends or in the tourist season.

### TÂRGU MUREŞ – BRAŞOV

**Distance:** ~ 180 km

**Duration:**

By car: 3h – 3h 30min

By train: 4h – 5h

By minibus: ~3h 30min

**Notes:** route with mountain sections and national roads.

### SIBIU – BRAŞOV

**Distance:** ~ 140 km

**Duration:**

By car: 2h 30min – 3h (DN1)

By train: ~3h

By minibus: ~3h

**Notes:** mountain route.

### BACĂU – BRAŞOV

**Distance:** ~ 180 km

**Duration:**

By car: 3h – 3h 30min

By train: 4h – 5h

By minibus: ~3h 30min

**Notes:** route crossing the Eastern Carpathians.

### ✈ INTERNATIONAL ACCESS

For participants arriving from abroad, the closest airports are:

- **Bucharest (OTP)** – the largest airport, offering the most international connections
- **Sibiu**
- **Târgu Mureş**
- **Bacău**
- **Braşov (Ghimbav)** – local airport, currently developing its operations

After arrival, travel to Braşov can be easily arranged by train, car, or minibus, following the routes detailed above.

Participants travelling from other Romanian cities can reach Braşov by choosing the optimal routes, using the national road network and motorways where available, depending on their point of departure. The region's strong connectivity ensures efficient travel from all directions.

# Unde ne cazăm?

Descoperiți locațiile noastre de cazare premium pentru congres și evenimente business în Brașov, fiecare oferind o experiență unică, adaptată nevoilor.



**KRONWELL**  
Brașov Hotel

**QOSMO**  
BRASOV HOTEL

**KANOPIAN**  
Penthouse Hotel



**KRONWELL**  
Hotel Brasov

- Eleganță și rafinament
- Confort și servicii business de top
- La 5 minute de Centru

📍 Bulevardul Gării 7A



**QOSMO**  
Hotel Brasov

- Design modern și stilat
- Conectat direct la viața urbană
- Parte din complexitatea Coresi

📍 Strada Zaharia Stancu 4



**KANOPIAN**  
Penthouse Hotel

- Apartamente exclusiviste cu jacuzzi pe terasă
- Intimitate și confort premium
- Penthouse-uri moderne în zona Coresi

📍 Strada Zaharia Stancu 8F

## KRONWELL BRAȘOV HOTEL

### Business & Lifestyle Hotel

A premium business & lifestyle hotel in Brașov, ideal for accommodation and for hosting congresses. Renowned for top-quality services, modern facilities, and excellent ratings (9.7+).

The Belaqva Spa & Wellness Center offers a complete relaxation infrastructure, available for an additional fee:

- ✓ **Heated indoor pool**, equipped with ergonomic loungers
- ✓ **Thermal area:** Finnish sauna, Turkish bath (hammam), salt cabin, and emotional showers (tropical rain)
- ✓ **Spa services:** massages (relaxation, back, legs, scalp), facial and body treatments, scrubs, and wraps
- ✓ **Fitness:** modern fitness studio with personal trainer and yoga classes.



**Gastronomy and Social Spaces** - The hotel offers several areas dedicated to culinary experiences:

- ✓ **Adagio Restaurant:** an elegant space for à la carte and gourmet dishes
- ✓ **Couchette Traveller's Bistro:** serves healthy menus with fresh ingredients, combining Italian, French, and Asian cuisine
- ✓ **C-Bar (Cigar Bar):** an ideal place to unwind with fine drinks and a curated selection of spirits
- ✓ **Madame Prallini:** in-house confectionery and patisserie with artisanal products.

### **Room and Business Facilities:**

- ✓ The rooms are equipped with state-of-the-art technology and premium comfort features.
- ✓ **Smart amenities:** Smart TV, free WiFi, individual climate control, and an iPad tablet in selected rooms.
- ✓ **Comfort:** Serta Perfect Sleeper mattresses, hypoallergenic bed linen, underfloor heating in the bathroom, and a pillow menu.
- ✓ **Business:** Conference and event centre with dedicated meeting rooms, as well as an in-room work desk in business-category rooms.



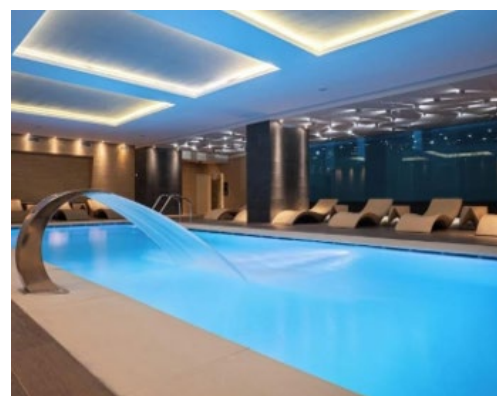
### **Other Facilities and Services:**

- ✓ **Entertainment:** billiards table, bowling, table tennis, and an on-site casino
- ✓ **For families:** children's play area ("Happy Shark") and kids' club
- ✓ **Additional services:** free parking (including underground), transfer to Poiana Brașov (upon request), room service, and laundry service.

Kronwell Brașov is one of the most highly rated business hotels in Romania, with a score above 9.7 and multiple international awards.

- ✓ 81 modern rooms
- ✓ Wi-Fi & full business facilities
- ✓ Complete BELAQVA Spa
- ✓ Premium restaurants

**RATES:** ✓ Single room – **110 EUR**  
✓ Double room – **130 EUR**



# QOSMO BRAȘOV HOTEL

## Smart Hospitality

### Key Facilities

- ✓ Free parking: the hotel offers free private on-site parking
- ✓ Dining: includes the Monark restaurant serving international cuisine, a cocktail studio, and a buffet-style breakfast
- ✓ Business centre: features a conference centre with 7 meeting rooms, ideal for corporate events
- ✓ Events: provides dedicated concierge services for organising weddings and ceremonies
- ✓ 24/7 reception: round-the-clock front desk services, ATM, and concierge service
- ✓ Transport: airport shuttle service available (at an additional cost)
- ✓ Internet: free high-speed WiFi available throughout the property.



### Room Facilities

- ✓ The 128 rooms and 5 suites are equipped with integrated technology for a personalised experience
- ✓ **Technology:** adaptive lighting system with touch-screen controls and 55-inch Smart TV with mirroring function
- ✓ **Comfort:** individual climate control, king-size beds with Gruppo Formenti premium mattresses, superior soundproofing, and blackout curtains
- ✓ **Bathroom:** glass walls with electric privacy curtain, heated floors, bathrobes, slippers, and anti-fog mirror
- ✓ **Additional amenities:** safe, minibar, tea-making facilities, and complimentary Illy coffee.



QOSMO Brașov redefines the hotel experience through modern design and personalised services.

- ✓ Premium location – Coresi District
- ✓ Smart rooms & contemporary design
- ✓ Restaurants & urban lifestyle
- ✓ Spa & wellness access

### RATES:

- ✓ Single room – **105 EUR**
- ✓ Double room – **125 EUR**



## KANOPIAN PENTHOUSE HOTEL

### Premium Apart-Hotel

#### Main Facilities and Services

- ✓ Laundry service, grocery delivery, dry cleaning
- ✓ Valet parking
- ✓ Underfloor heating
- ✓ Dishwasher
- ✓ Stove / refrigerator and freezer
- ✓ 55" 4K Smart TV in every room
- ✓ Smart Home system / Security alarm
- ✓ Breakfast (additional cost)
- ✓ Exclusive personal transport
- ✓ Car rental and airport transfer services



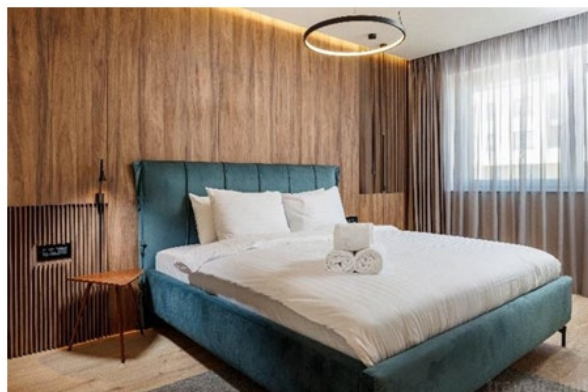
KANOPIAN properties are conveniently located in the heart of Braşov, with the city's most iconic landmarks within just a few kilometres. You are only a 10-minute drive from the historic city centre and a 4-minute walk from the largest mall in Transylvania, *Coresi Shopping Resort*. Other sought-after nearby attractions include *Paradisul Acvatic* (2.3 km), *Strada Sforii* (4 km), *Tâmpa Cable Car* (6 km), and *Braşov Adventure Park* (6.6 km), among many others.

A premium apart-hotel located in the modern Coresi district, offering an exclusive accommodation experience, ideal for congress participants and business events.

- ✓ Apartments 45–100 sqm+
- ✓ Private terraces & jacuzzi
- ✓ Smart technology
- ✓ Secure parking & controlled access

#### RATES:

- ✓ Single room – 105 Euro
- ✓ Double room – 125 Euro



# Unde ne cazăm?



## HOTELURI PARTENERE

Confort și servicii pentru o sedere plăcută



## LOCATII EXCELENTE

Aproape de punctele cheie ale orașului



## EXPERIENȚĂ COMPLETĂ

Cazare de calitate pentru un eveniment de succes

**Q**  
**QOSMO**  
HOTEL  
★★★★★

📍 Str. Zaharia Stancu nr. 2A  
🚶 7 min de Centrul Civic  
🚗 10 min de Piața Sfatului



**Q**  
**KANOPIAN**  
★★★★★

📍 Str. Zaharia Stancu 8F  
🚶 7 min de Centrul Civic  
🚗 10 min de Piața Sfatului



**KRONWELL**  
BRASOV  
★★★★★

📍 Bd. Gării nr. 7  
🚶 3 min de Gara Brașov  
🚗 10 min de Piața Sfatului



**BRAȘOV**

Un oraș. O experiență completă.



Natură și relaxare



Istorie și cultură



Acces facil și conectivitate

**BRASOV**



# COMPANION PROGRAM

What do we visit?



## CITY OF SINAIA

Located 49 km from Brașov, the city of Sinaia is a picturesque destination in Prahova County, at the foot of the Bucegi Mountains, and one of Romania's most famous mountain resorts. Known as the "Pearl of the Carpathians", the city is renowned for its spectacular landscapes, fresh air, and remarkable tourist attractions.

Among the most important attractions are Peleş Castle, the former royal residence, Sinaia Monastery (which also gave the town its name), Pelișor Castle, the Sinaia Casino, and the Sinaia Miniature Train Museum. Sinaia is also a popular destination for winter sports, thanks to the nearby ski slopes.



Castelul Peleş



Castelul Peleşor



Cazinoul Sinaia



Mănăstirea Sinaia

## BRAN

The commune of Bran, located in Braşov County and 30 km from the city of Braşov, is another popular tourist destination in Romania, renowned for its picturesque scenery and its connection to the Dracula legend. Situated at the foot of the Bucegi and Piatra Craiului Mountains, the village offers spectacular landscapes and fresh mountain air.

The main attraction is Bran Castle, a well-preserved medieval fortress that draws visitors from around the world thanks to its impressive architecture and the mysterious stories associated with Vlad Țepeş. In addition to the castle, tourists can explore local traditions, handcrafted products, and the region's traditional cuisine.

Bran is also an ideal starting point for hikes, outdoor activities, and for discovering the authentic villages of Țara Bârsei.



Cheile Moieciului



Liberty Bear Sanctuary



Bran Castle